

社工常用家庭结构图I



男性



女性



性别不明



婚姻关系



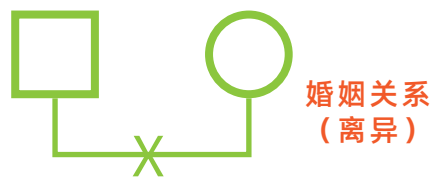
婚姻关系
(松散)



未婚同居



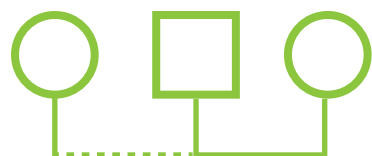
关系恶化
(分居)



婚姻关系
(离异)



近亲结婚



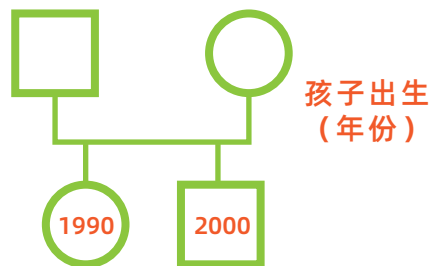
男性婚外情



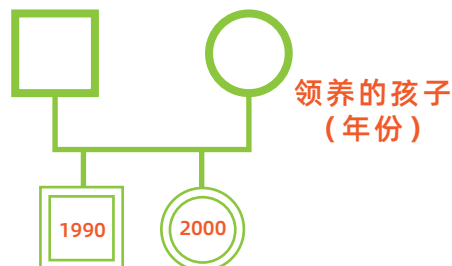
女性婚外情



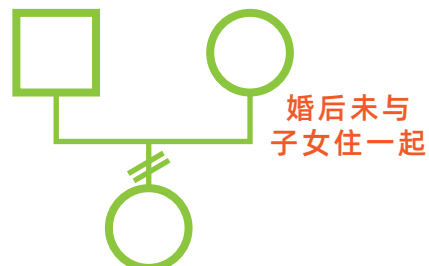
丧偶后再婚



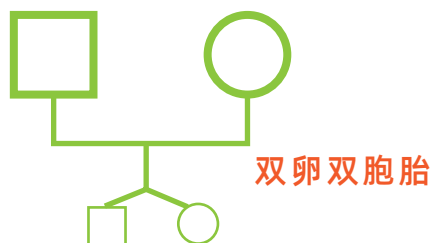
孩子出生
(年份)



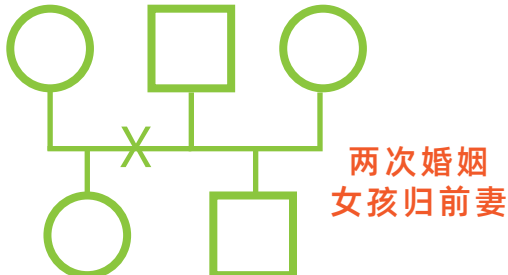
领养的孩子
(年份)



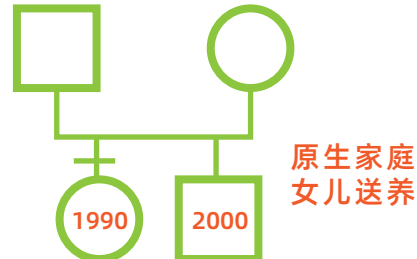
婚后未与
子女住一起



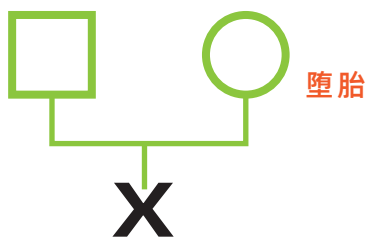
双卵双胞胎



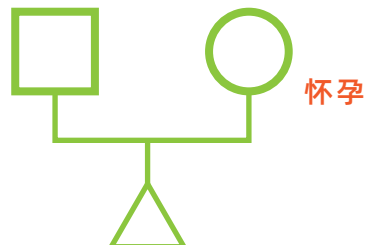
两次婚姻
女孩归前妻



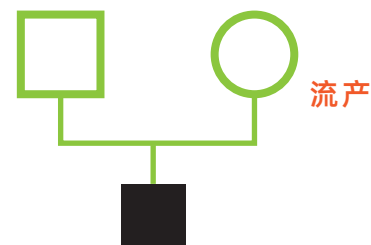
原生家庭
女儿送养



堕胎



怀孕



流产

社工常用家庭结构图III

通过以下家庭图
尝试了解他们的家庭关系

